

From Valsecca Pedezzolo to Prabulè

Road access from Bergamo:

Villa d'Almè, Strozza, Sant'Omobono Terme, Valsecca
Km. 25

Start of excursion:

Via Carevi di Valsecca (720 m.)

Travelling time:

1^h 30' (a/r)

Height difference:

117 m.

Difficoulties:

AT   

Trail and mountain road

Recommended period:

All year round in the absence of snow

Water on route:

NO

Rest stop:

La piccola Trattoria da Tite Tel: 035 852976

Information:

Municipality of Sant'Omobono Terme Tel: 035 851113

Topographic map:

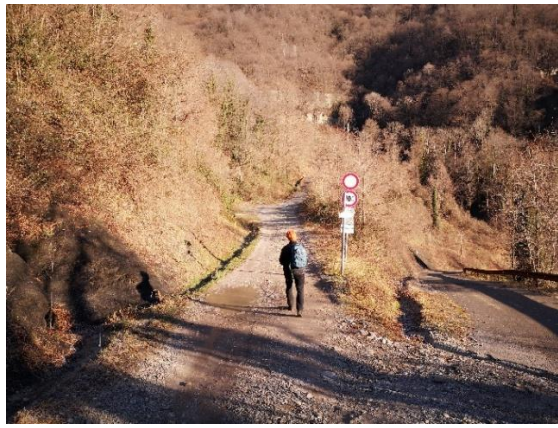
IGM F. ° 33 III N.O. Palazzago

Geographical Coordinates:

45,8264° N, 9,4965° E



After parking the vehicle in Via Carevi, we set off on the slightly uphill road.



At the fork in the road at Pedezzolo di Valsecca, we keep to the right and proceed downhill.



Having reached a small built-up area, we continue between two houses.



The bottom of the path is now compact paving.



Having passed the houses, we arrive at a parking space and continue slightly uphill to the left.



The downhill path is protected by wooden barriers towards the valley, for the safety of the walk.



The ground for a short stretch is stony, but spacious enough.



On the right are exotic animals in the wild.



After a bend on our right we admire a Dromedary.



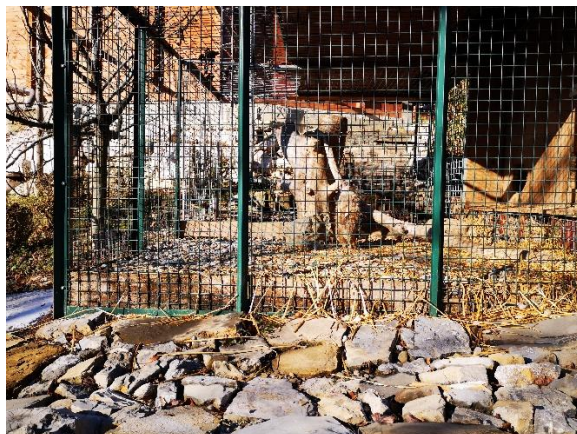
On the left we admire some lamas in a narrow enclosure.



On the right in another enclosure are Emus. This species is represented by many different characteristics.



On our left there is an enclosure with cubs, roosters and rabbits.



In the cage on the right is a Surinam, with its typical posture.



Inside a glass case, a small boa rests.



On perches facing the sun, a series of birds of prey rest.

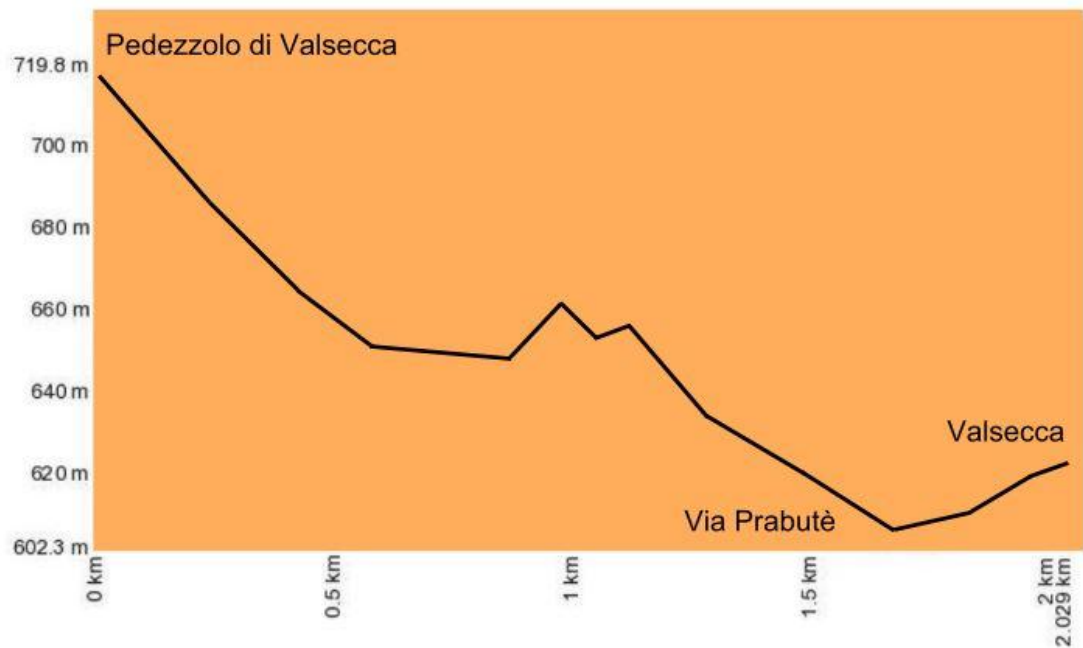


Having completed our little tour of the park, we leave the Agriturismo Scuderia Della Valle.



After walking uphill on Via Prabutè, we reach Piazza Marco Todeschini, for a visit to the Sanctuary of the Crucifix.

Altimetry



Route Map

