

From Bossico under Mount Colombina

Road access from Bergamo:

Sovere, valle Borlezza, Bossico, via Papa Giovanni XXIII, via Sette Colli, Via Locatelli, via San Fermo, Car parking Bossico Km. 45

Start of excursion:

Car parking of Bossico, via San Fermo (860 m.)

Travelling time:

2^h 30' (a/r)

Height difference:

395 m.

Difficulties:

AEE



Recommended period:

All year round without snow

Water on the route:

YES

Rest stop:

SI

Manager's address:

Farmhouse "Cinque Abeti", Tel: 347 9038874

Information:

Pro Loco Bossico, Tel: 035 988365

Topographic map:

IGM F. ° 34 III N.O. Lovere

Geographical coordinates:

45,832250° N, 10,04157° E

We start from the Bossico car park in Via San Fermo, and proceed in the direction of Pozza D'Aste la Chiesetta Caduti, following the signs on the tourist board.



We start the walk after parking the car.



The signpost informs us of the route to follow.



Before leaving the parking area, it is advisable to fill the appropriate containers with a good dose of water from the drinking fountain.



After passing the masonry shrine, we are about to reach the first fork in the road.



At this first fork we continue straight ahead, on the road that now changes its surface to fairly compact earth.



On reaching the second fork, we choose the left-hand downhill section, which keeps to the dirt road surface for now. We continue keeping to the left, following signs for Colle San Fermo, on the CAI 553 trail.



At the ford, the dirt road ends and the cemented path begins, with an already demanding gradient from the first metres.



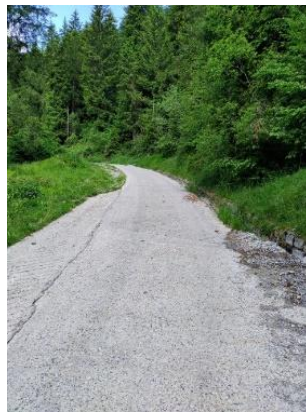
After the cemented section for about 700 metres, the section begins, always uphill, on paved ground for about 100 metres.



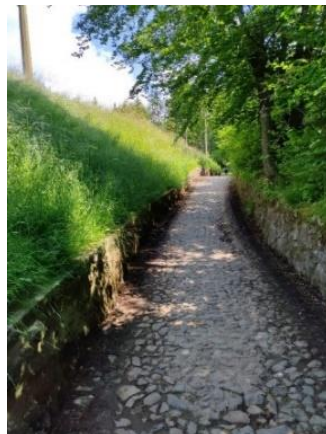
We are following path n° 553.



As we continue, we flank a farmhouse on the left-hand side and the path begins to level out for about 800 metres.



After 300 metres, the path begins to climb again for about 100 metres.



We now encounter a flat section on cobbled ground.



We pass a Santella, which we pass on the right and follow the signs for Colle San Fermo.



We continue straight ahead with the path beginning to be unpaved.



We reach the small lake where we can stop for a picnic under the covered structure near the Chiesetta dei Caduti, there is also the possibility of using the grill.



At the crossroads we keep to the right and follow path 553 on a dirt track for about 200 metres.



The sign confirms that we are on the right path.



The path starts to climb again and becomes cemented, the section becomes very steep.



At the fork, keep to the right, following the signs for Colle San Fermo.



After yet another wall, we finally come to a clearing with a bench where we can rest for a while.



After this little rest, continuing along the path, we reach the structure under which we can stop for a picnic.



Continuing on CAI path 554, we arrive at the small church of San Fermo.



A small lake also appears.



The signpost advises us which route to follow, with times for the various destinations indicated.



On the left is a structure of an agritourism.



Past the structure we have a view of the summit of Mount Colombina.



We resume our walk following the dirt track that passes between the huts and the agritourism.



The landscape we encounter changes from the view to the left of the valleys in the distance.



To the view to the right of the path of Lake Iseo.



The path becomes narrow and unpaved and after a small climb begins to descend towards the valley floor.



We then reach the locality of "Cadi de la Pest".



We now pass a small farmhouse with a marker on the corner of the structure.



Barriers placed along the path do not make it any easier to follow.



We pass a barrier informing us of the state of the path.



Almost at the end of the path we find a second barrier to pass.



At the end of the path we glimpse our destination on the left.



At the fork, we turn left and enter an agro-sylvo-pastoral track.



We reach the farm where we choose to stop for a small snack.



After the break, we set off again, taking the agro-sylvo-pastoral road in the opposite direction, to return to the starting point of the hike.



The ground is made up of compacted stones, and in the event of rain, care must be taken on the descent.



At the crossroads, we continue straight downhill.

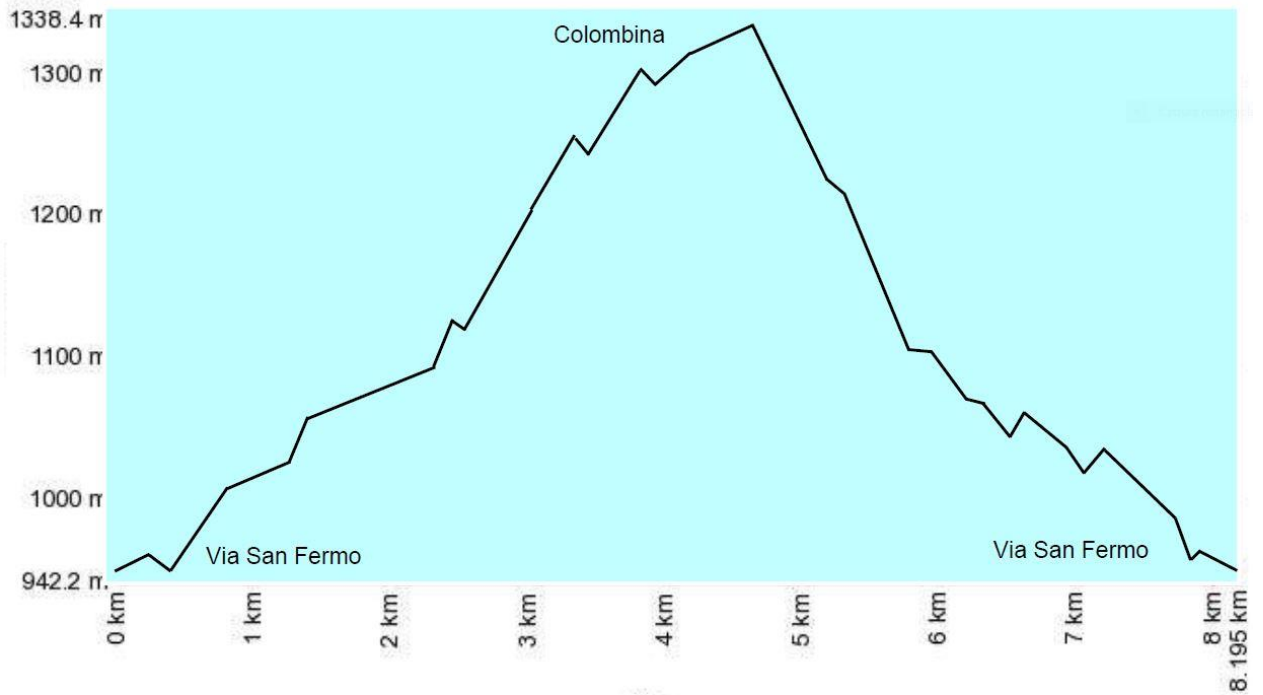


On the descent, we pass a drinking fountain on the right.



We return to the morning fork and continue straight on to the Bossico car park.

Altimetria



Mappa del percorso

