

# Monte Isola Sanctuary of the Ceriola

## Road access from Bergamo:

Sarnico, Iseo, Sulzano, with ferry to Peschiera Maraglio (230 m.)  
Km. 57

## Start of excursion:

Peschiera Maraglio (230 m.)

## Travelling time:

3<sup>h</sup> 20' (a/r)

## Height difference:

394 m.

## Difficulties:

AE   

## Recommended period:

All year round

## Water on the route:

YES

## Rest stop:

Cure Bar at the Sanctuary

## Information:

Municipality of Monte Isola Tel: 030 9825226

## Topographic map:

IGM F. ° 34 III S.O. Sarnico e IGM F. ° 34 III S.E. Gardone Valtrompia

## Geographical coordinates:

45,6934° N, 10,0919° E

The excursion to the sanctuary of the Madonna della Ceriola starts from Peschiera Maraglio via Cure, the highest village on the island connected to Peschiera Maraglio by the small municipal bus service. We park our vehicles in Sulzano.



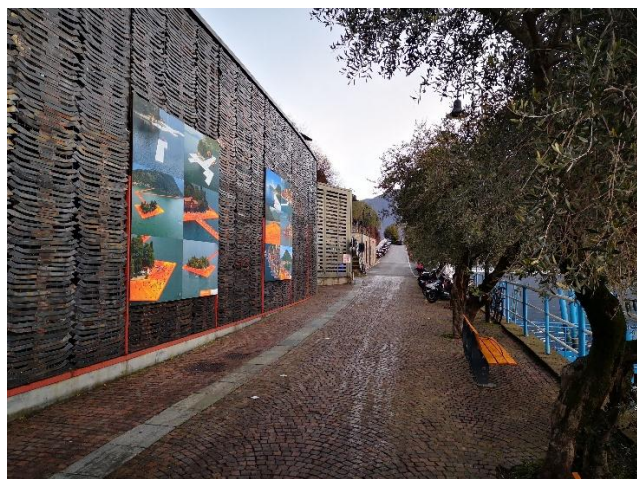
Montisola can be reached by using the ferry that connects Sulzano with Peschiera Maraglio.



We board the ferry at Sulzano.



We disembark at Peschiera Maraglio.



After disembarking, we head to the right and turn left at the fork.



Continuing on the paved road, we turn left.



We ascend, passing the path up to the Sanctuary on the right and the vertical CAI signs.



Once in Senzano, we turn right and cross the village.



At the fork we turn right in the direction of Cure.



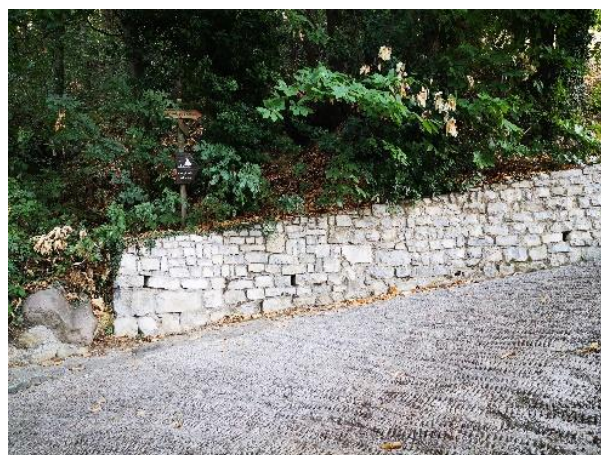
We reach the bus terminal and drink at the drinking fountain.



We enter Cure and ascend in the direction of the Sanctuary.



At the fork we continue to the right.



We continue along the route and pass a hairpin bend on firm ground.



We pass under the arch that directs us towards the Shrine.



We are in a small forest and the coolness is pleasant.



We reach a cobbled section with small steps that facilitate the ascent to the Sanctuary.



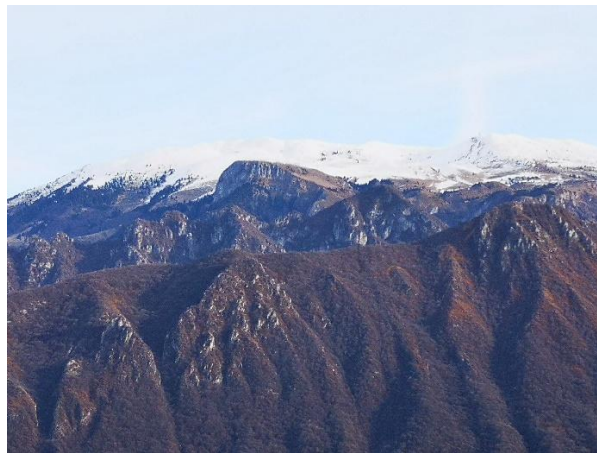
We ascend the final ramp to the Sanctuary.



When we reach the Sanctuary, we quench our thirst at the fountain and admire the landscape.



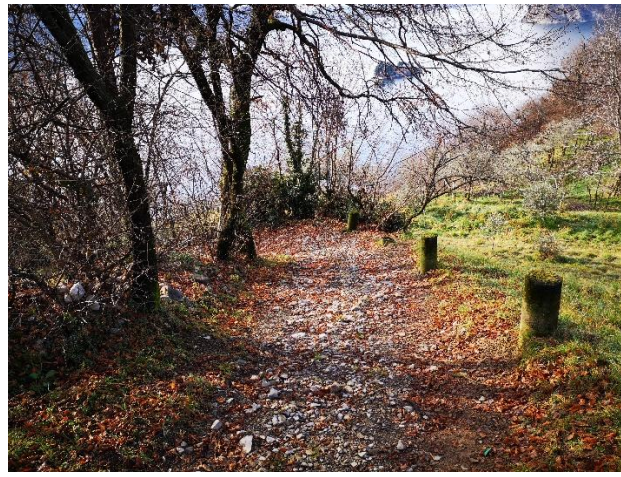
We return to the Sanctuary from the south.



We catch a glimpse of the snow on the mountain peaks towards the north/east.



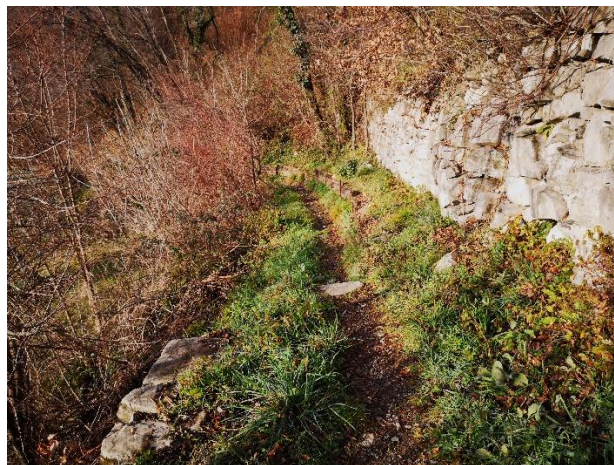
On the way back to the lake, after passing the village of Senzano, we turn right towards Sensole. Here the Joelette will continue towards Peschiera Maraglio along the asphalted road.



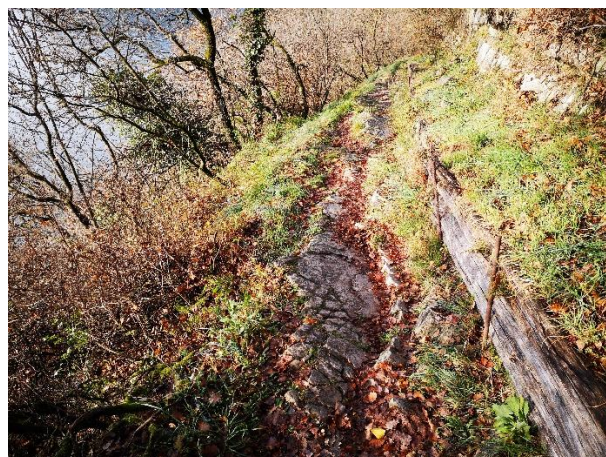
We begin the descent on terrain with small stones and compacted earth.



The descent continues on a wide ballast with furrows left on the ground by agricultural vehicles.



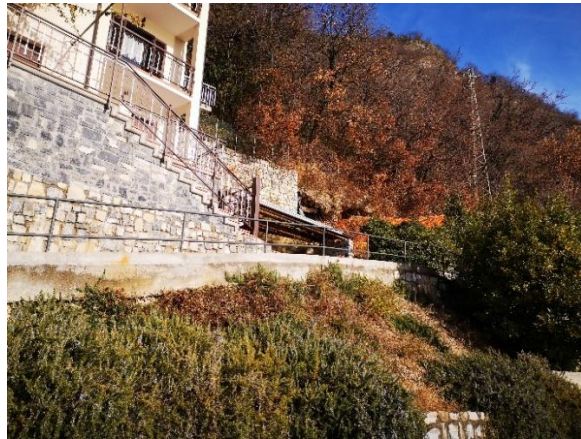
Now the route changes, the width of the path narrows, we face a mountain path.



The bottom changes, now it is a set of slabs towards the valley and in the centre a small passage.



On the way down we face a passage under fallen trees.



At the end of the descent we reach the asphalt road that joins Sensole with Peschiera Maraglio.



We reach the landing stage at Sensole and see the island of São Paulo in front of us.



We resume our journey towards our final destination, Peschiera Maraglio.



At the crossroads we see the CAI vertical signs on the pole in front of us, turn left and continue.



We reach the crossroads and turn right.



Leaving Sensole, towards the lake, there is a typical local trattoria.



Before the turn to the left, we look towards the village of Sensole.



Along the way, at a bar, there are public toilets.



To the left is a children's playground.

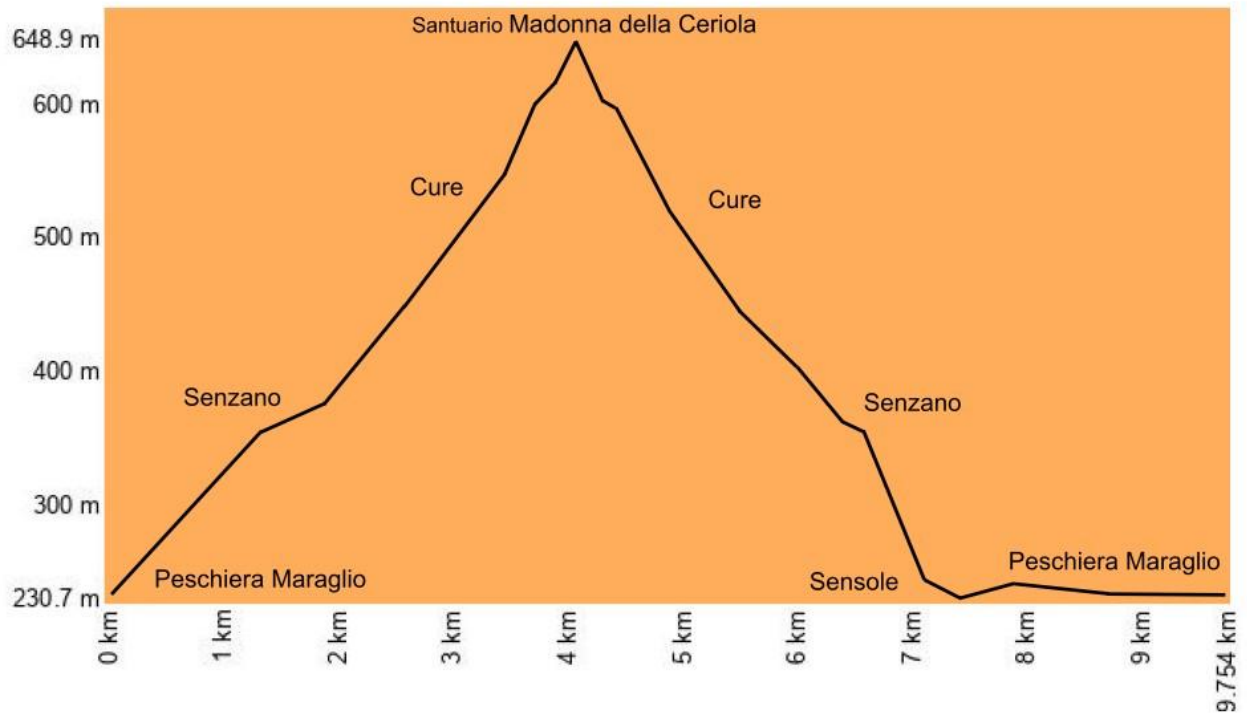


Still on the left, we admire a beautiful picnic area.



Continuing on, we reach the village of Peschiera Maraglio, take the ferry back and reach Sulzano from where we started our route

# Altimetry



# Route Map

