

Along the Oglio River in Civate al Piano

Road access from Bergamo:

Seriate, Calcinate, Pontoglio, Civate al Piano.
20 Km.

Start of excursion:

Car park at the Municipal Sports Centre in Via Pontoglio, Civate al Piano (180 m.)

Travel time:

1^h 40' (a/r)

Height difference:

80 m.

Difficulties:



Track and trail

Recommended period:

All year round in the absence of snow

Water on the course:

NO

Rest stop:

NO

Information:

Municipality of Civate al Piano: Tel: 0363 966411

Topographic Map:

IGM F. ° 46 I N.E. Palazzolo sull'Oglio

Geographical coordinates:

45.559356° N, 9.838374° E



After parking the car at the Municipal Sports Centre, we cross Via Pontoglio and set off on foot.



When we reach the barrier, we continue on the left towards the Casa degli Alpini.



Keeping to the left, we continue towards the grove.



The ground is covered with tall green grass, so much so that there are obvious tracks.



We reach a fork in the road and turn left.



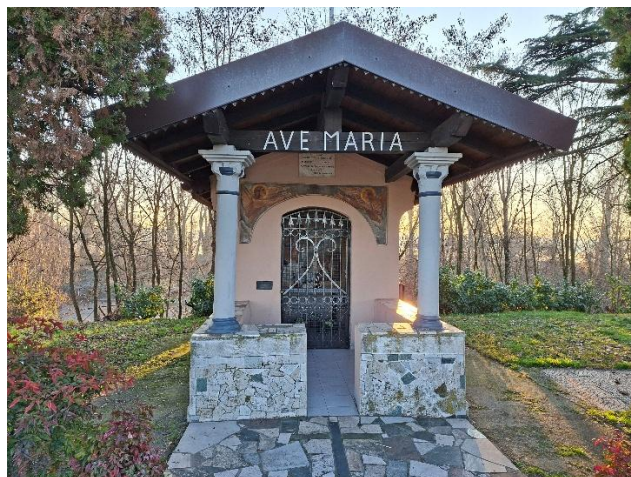
We continue, admiring the flow of the River Oglio on our right.



When we reach the fork, we turn left and begin to climb.



Continuing on the left, we come across a chapel.



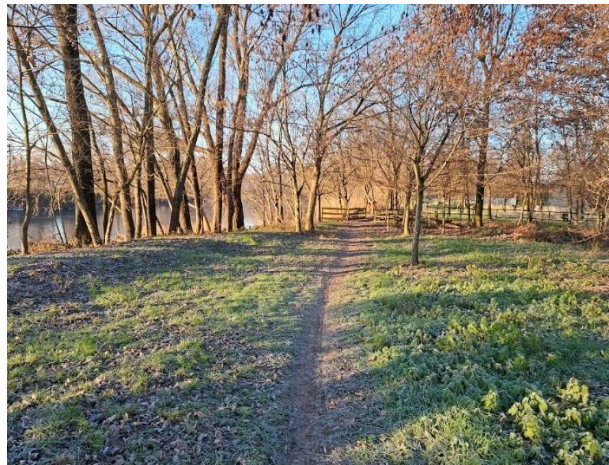
We have reached the Chapel of Our Lady of Loreto.



After returning to the path we took earlier, we keep to the left.



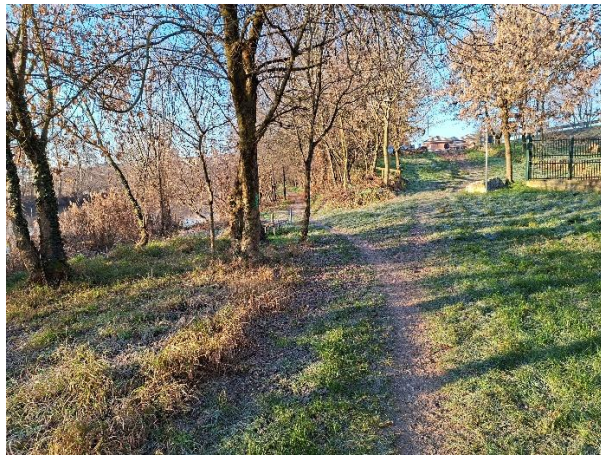
On our right, we can admire Restello Park.



The path narrows and the ground is compact.



The path runs along the right bank of the River Oglio.



At the fork, we keep to the left.



Now the path widens and the ground is compact and covered with leaves.



In the distance, we can see the first houses of Cividate al Piano near the path.



Now the ground is compact and free of foliage, winding its way near the “peaceful Oglio”.



In front of us is a small bridge that allows us to cross the beginning of the Roggia Donna canal.



In the distance, we can see the bell tower of the sanctuary.



Further on, we turn right to reach the sanctuary.



At the end of the path, we reach the sanctuary.



We have reached the Sanctuary of Our Lady of Sorrows of the Green Fields.



We enter and admire the beautiful interior, rich in spirituality.



After leaving, we continue along the path that follows the River Oglio.



We stop to admire the dam on the River Oglio.



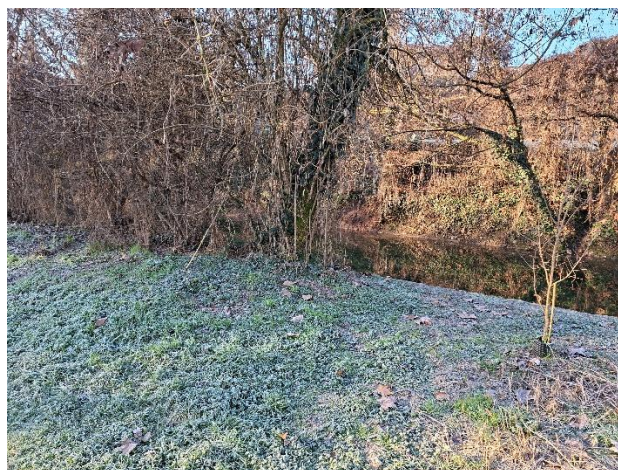
We have reached the Chapel of San Michele.



Continuing along the path, on our right there is a picnic area where you can read books.



In front of us, we reach a small bridge over a branch of the Roggia Donna canal.



The Roggia Donna canal flows to our right.



The River Oglio flows to our left.



Now the path rises to easily cross the Roggia Donna canal.



We continue along the path that winds through the fields outside Civate al Piano.



At the end, we glimpse a slight incline with a dam.

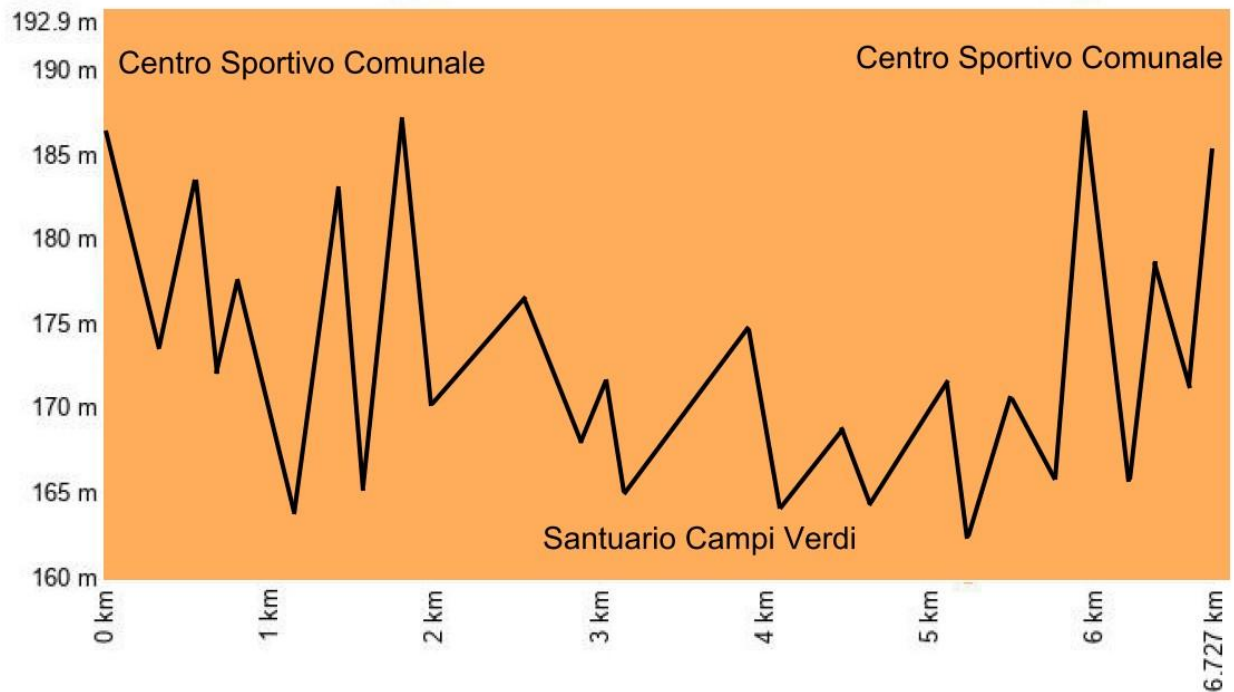


After passing the barrier, we climb towards the chapel in front of us.



We have reached the Chapel of the Madonna delle Scredine, the destination of our walk. After a short break, we walk back to the point where we started.

Altimetry



Route map

