

Monte Gremalto Loop Trail

Road Access from Bergamo:

Trescore Balneario, Borgo di Terzo (Valle Cavallina), Grone, Colli di S. Fermo
Km. 32

Start of the hike:

Colli di S. Fermo, Piazza Virgo Fidelis, Carabinieri Monument (1265 m.)

Travel time:

50' (a/r)

Elevation gain:

130 m.

Difficulty:

AE  

Paved road, concrete road, and trail

Recommended time of year:

No snow all year round

Water along the route:

NO

Rest stop:

NO

Information:

Municipality of Grone Tel. 035 8220448 24060

Topographic map:

IGM F. ° 34 III N.O. Lovere

Geographic coordinates:

45.742524° N, 9.942188° E



Before starting the hike, be sure to get a parking ticket.



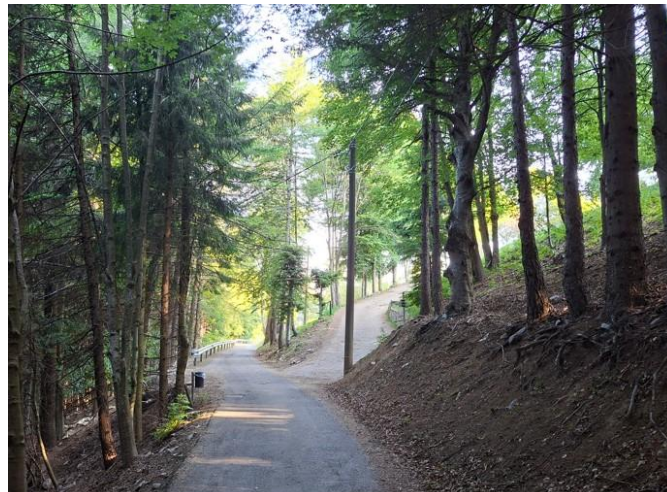
We begin the route on a gently sloping section of paved road.



We continue downhill along a gentle slope on an easy path.



We pass a typical mountain cottage on our right.



We reach a fork in the road, turn right, and begin the ascent.



On our right is a signpost providing valuable directions.



The surface has now changed to concrete mixed with small pebbles, and there are tracks left by a herd of cattle.



On our right is a shelter for agricultural vehicles.



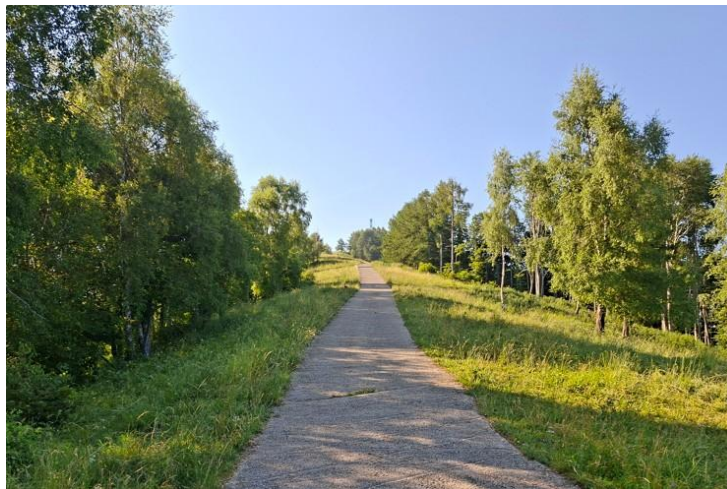
On the left side of the curve, a structure has been set up to protect the dried hay.



The road continues uphill, with a series of hairpin turns to make the journey easier.



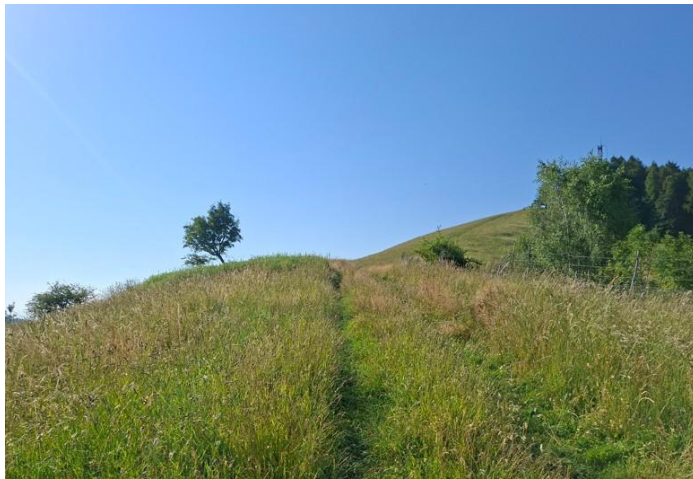
We turn right at the hairpin turn, which will lead us easily to the next section of the road.



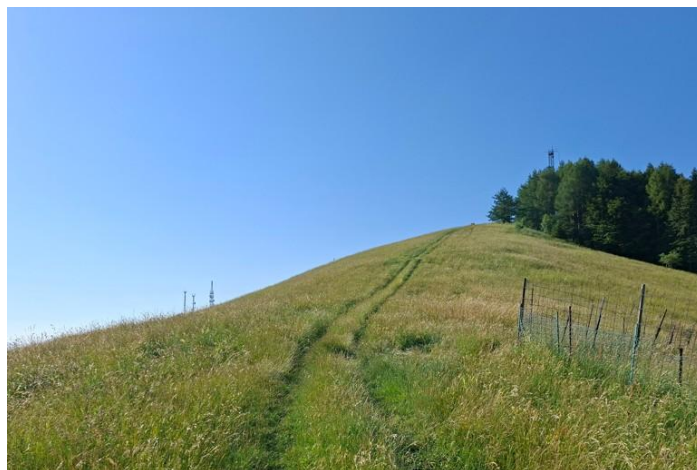
We reach a long straight stretch, still on a concrete surface mixed with small stones.



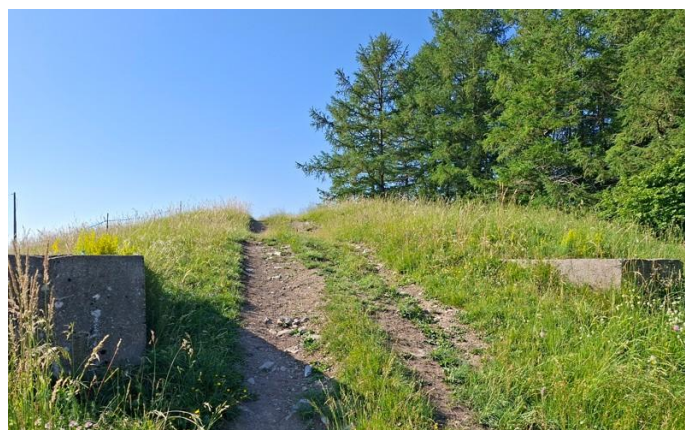
We leave the road and continue along a path over rocks and through a meadow.



We come to a barely discernible trail across the meadow, marked by ruts left by carts and farm vehicles.



In the distance to the right, we can see the destination of our climb.



In this section, the terrain changes: the greenery decreases and the dirt path becomes more prominent.



We have reached our destination, Monte Gremaldo (1,322 m).



From the plateau at the summit, we admire the Cavallina Valley to the right.



To the left lies the valley leading toward Adrara San Rocco.

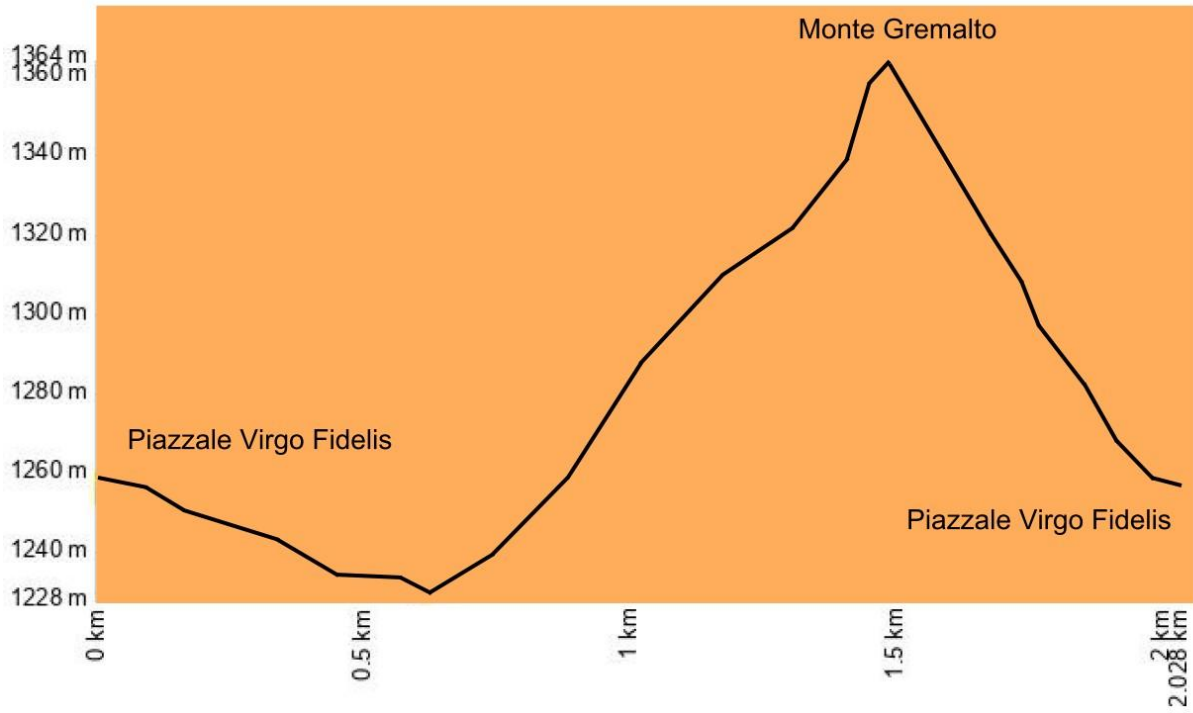


The descent continues across a meadow with fairly tall grass, and we reach the bobsled track on the left.



We are now within sight of our starting point, the Virgo Fideli plaza.

Elevation Profile



Route map

